

PITE 3920 Battery Monitor

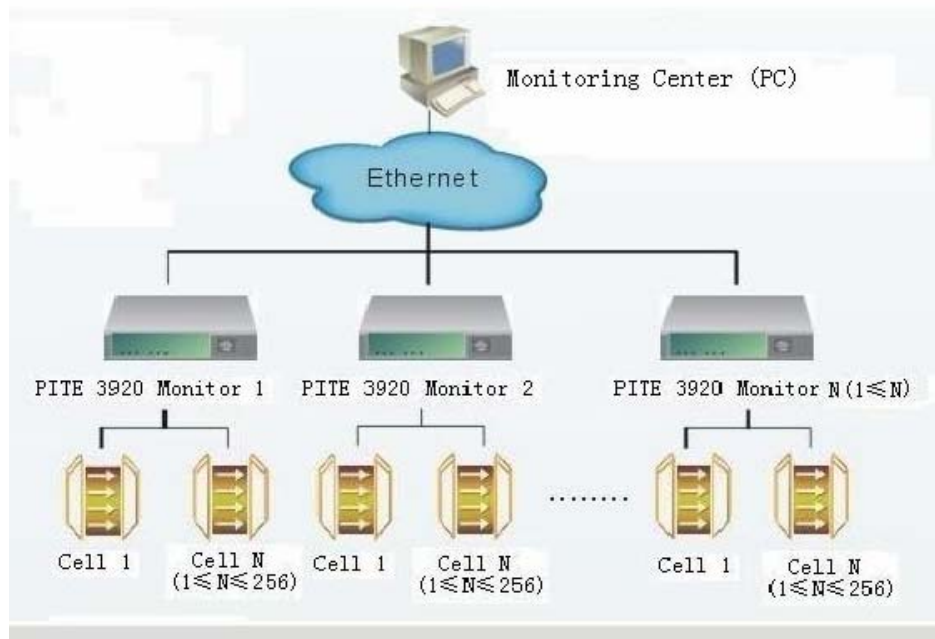


PITE 3920 is a battery wireless monitor for telecom and power industry applications.

By around-the-clock monitoring, the battery monitor checks and analyzes the condition of each cell for resistance, overall voltage, overall current, ambient temperature, etc. It could provide early warning for batteries malfunction before they are worn, and thus optimize their performance.

Example of Application

PITE 3920 is applied for real time monitoring through the connection of internet. By using the remote connection, you have all data in PC and keep alert to the warning alarm.



Features

- ◆ Could monitor individual cells up to 4, 8, 12, 24, 32, 48, 54, 108 and 256.
- ◆ Unique internal resistance monitoring technique reduces the damage to battery
- ◆ Automatically scan internal resistance and voltage, and keeps their records
- ◆ Scheduled auto-test for battery internal resistance, and automatically save record
- ◆ Analyze the changing trend of internal resistance and predict the battery life span.
- ◆ Real time monitoring on PC through internet connection
- ◆ Auto capacity testing in charging and discharging of battery string
- ◆ Auto-monitors battery string performance. Early warning for bad cells
- ◆ 3 ways of early warning for battery problem ensures its performance
- ◆ User could self-define the upper limit and lower limit of battery string volt, single cell volt, cell internal resistance, temperature and the alike. When the above parameters exceed the limits, the monitor

and remote connecting PC will give alarm and record the case.







- ◆ Fully take use of battery, save your money and it is environment friendly
- ◆ Collect data through the central computer. No personnel needed.

Technical Parameters

Cell Voltage	12V	0-16V Accuracy: 0.2%rdg±6dgt	
	2V	0-3V Accuracy: 0.5%rdg±6dgt	
Intenal resistance range	0.00-100mΩ Accuracy: 1%rdg±6dgt		
Total voltage	0-500V (could be customized)		
total current	0-100A (current sensor is optional)		
Monitoring cells amount	4,8,12,24,32,48,54,108,256		
Memorizer	1 MB		
Cells per String	32	Sampling Digit	10
Numbers of String	2	Temperature	-20~40℃
Dimensions (mm)	483*386*185		
Weight	5 kg		

NOTE: Single voltage, total voltage and total cells of batteries could be customized accordingly.

Accessories

 <p>Main unit</p>	 <p>USB drive</p>	 <p>AC power Cord</p>
 <p>Charge/discharge current sensor</p>	 <p>Floating charge current sensor</p>	 <p>Temperature Sensor</p>



User manual



Analyzing Software CD

Contact PITE

PITE TECH. INC.

4/F, Bldg A, Chiwan Industrial Park, Shaodi Road, Shekou Area, Shenzhen, China

TEL: +86-755-2680 5759

FAX: +86-755-2688 0310

www.pitotech.com

sales@pitotech.com